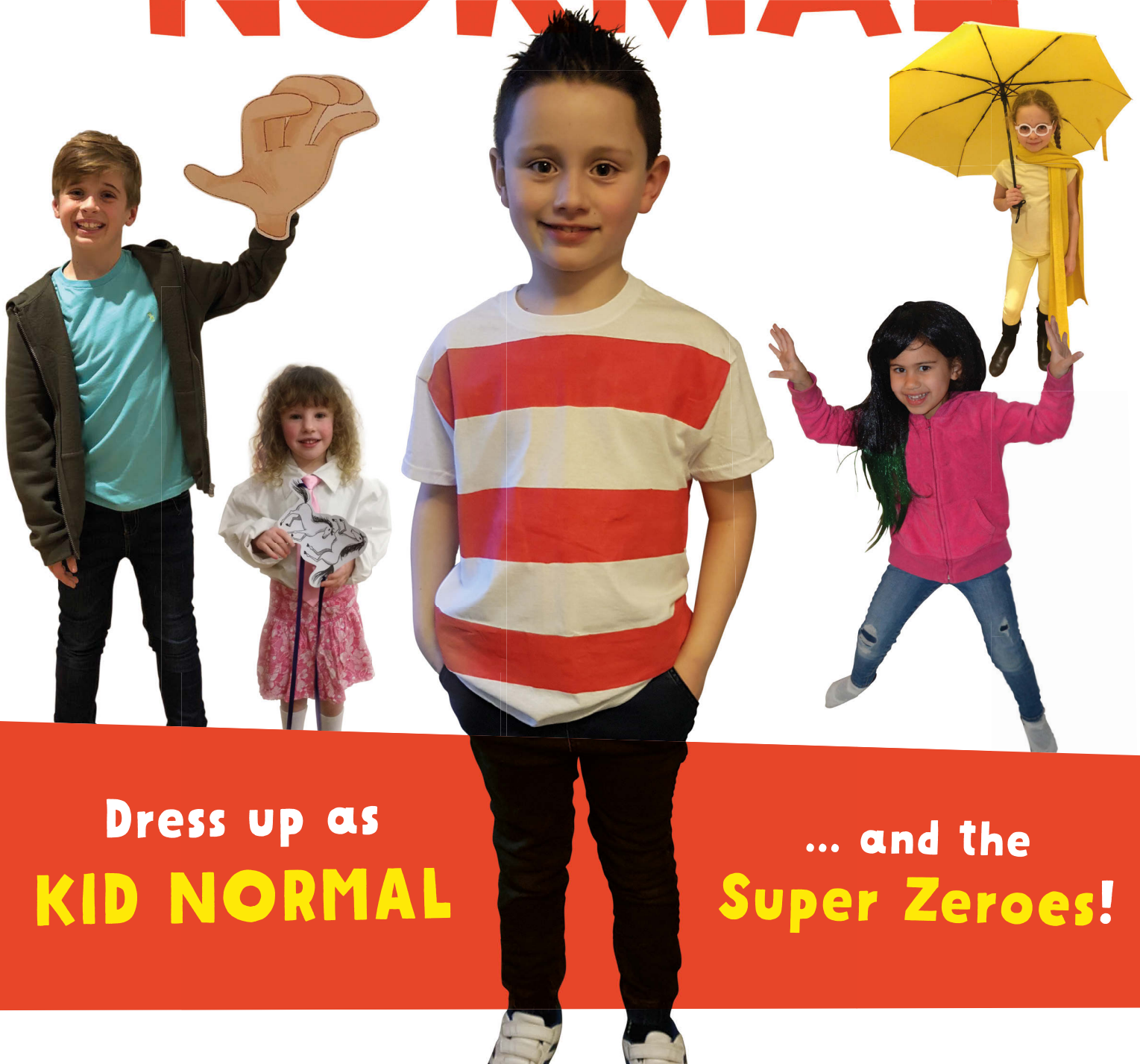


KID NORMAL



Dress up as
KID NORMAL

... and the
Super Zeroes!

DRESS UP AS MURPH



YOU WILL NEED:

- A white t-shirt
- Cardboard
- Red fabric paint or red acrylic paint
- A thick paintbrush
- Masking tape
- Scissors
- A pair of jeans



INSTRUCTIONS FOR THE T-SHIRT:

- Fit the t-shirt over a piece of cardboard so that it is flat.
- Use the masking tape to mark out the areas you would like to paint red all the way around the t-shirt. Make sure that the stripes are evenly spaced.
- Use the red paint to fill in the red stripes on the front of the t-shirt, painting right up to and over the masking tape to make sure you get a nice, crisp line. Leave to dry.
- Once dry, turn over and continue to paint the stripes on the back of the t-shirt. Leave to dry.
- When completely dry, peel off the masking tape to reveal your Kid Normal t-shirt! Be sure to follow the instructions on the fabric paint to 'fix' the colours.

Watch the How To video at kidnormal.com!

YOU DON'T NEED
SUPERPOWERS
TO BE A HERO

BLOOMSBURY



DRESS UP AS MARY

YOU WILL NEED:

- Yellow clothes, preferably a yellow jumper, white skirt, yellow tights or socks and a yellow scarf
- A yellow umbrella
- Downloadable glasses template
- Sticky tape
- Scissors
- Pencil
- Card



INSTRUCTIONS FOR THE GLASSES:

- Print out the below glasses template on to paper.
- Carefully cut along the black lines.
- Place the paper glasses on to card and cut these out.
- Fold along the two dotted lines and use sticky tape to affix the glasses arms to the main glasses frame.

Watch the How To video at kidnormal.com!

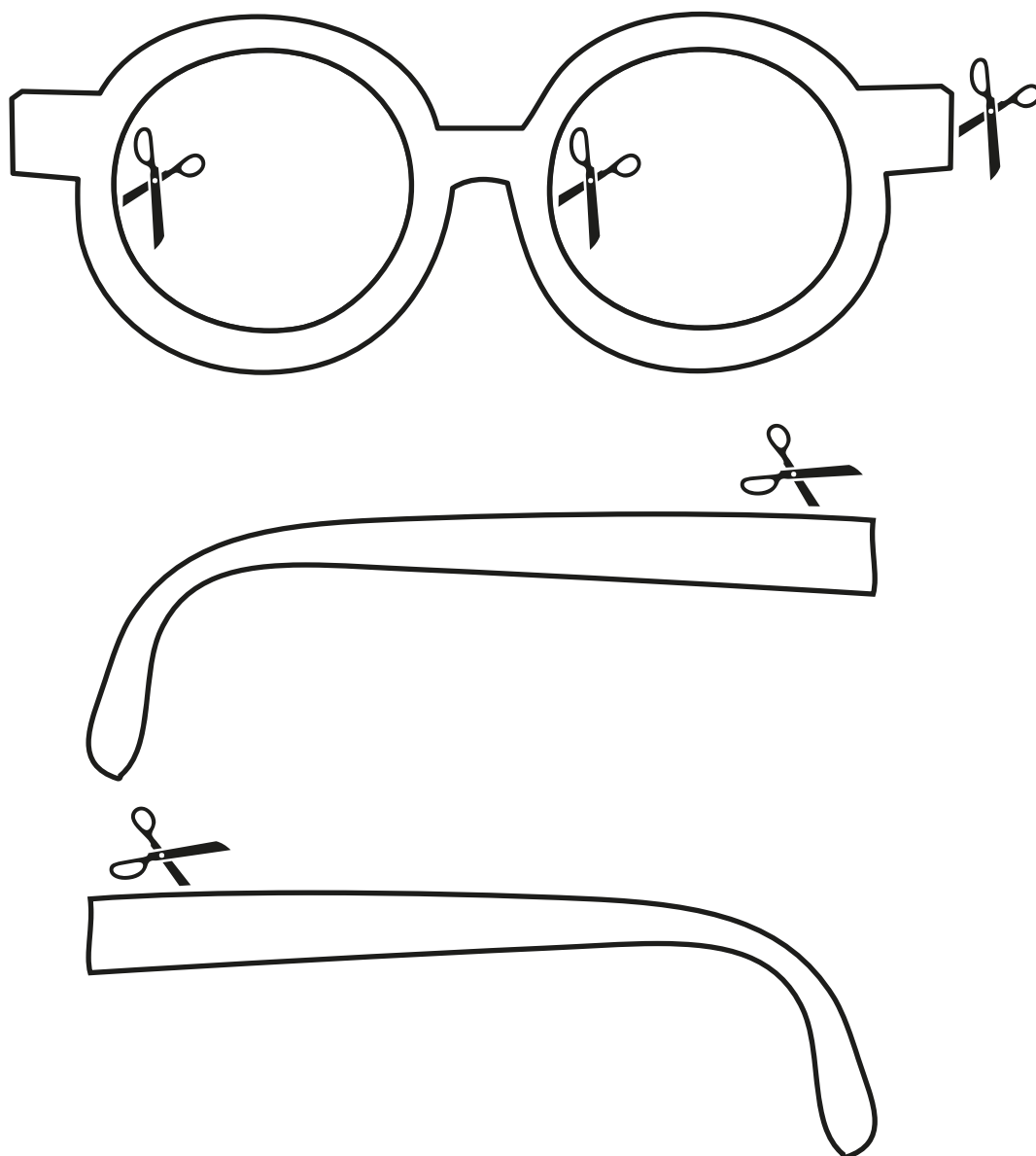


YOU DON'T NEED
SUPERPOWERS
TO BE A **HERO**

BLOOMSBURY



MARY'S GLASSES TEMPLATE



YOU DON'T NEED
SUPERPOWERS
TO BE A **HERO**

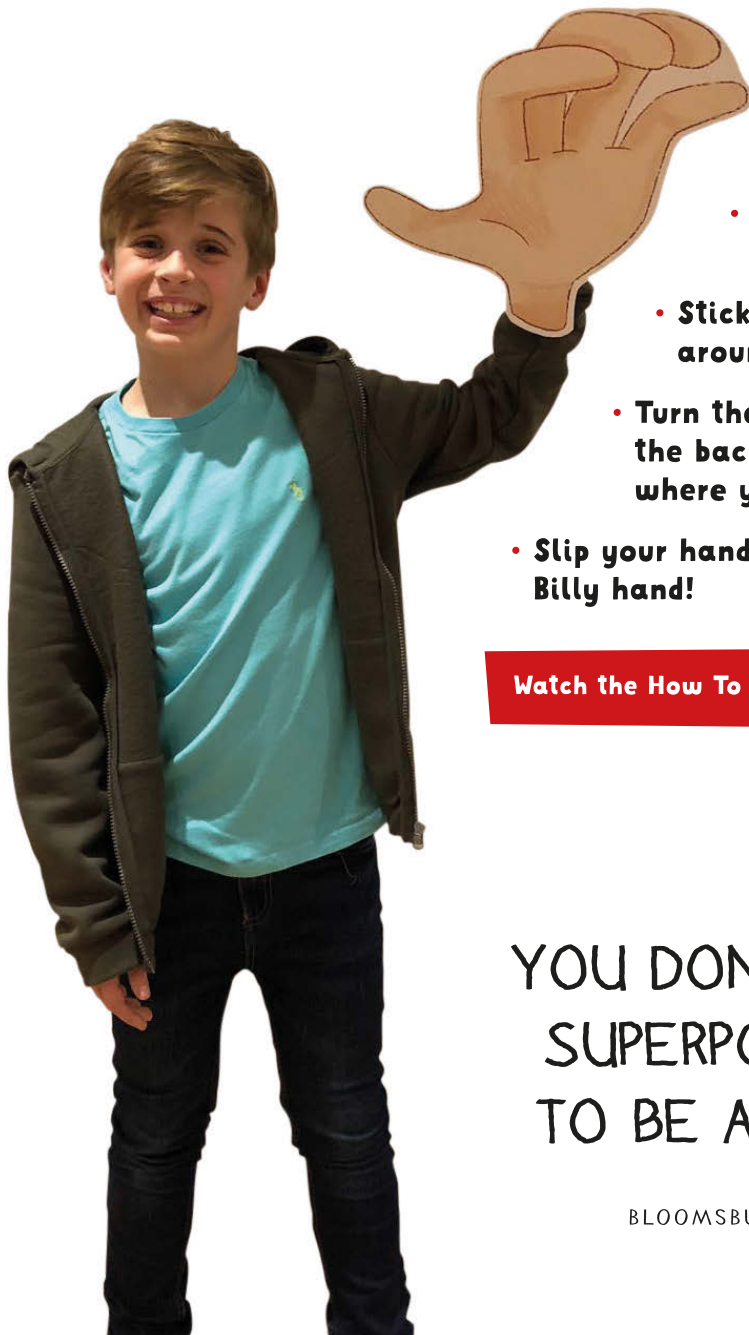
BLOOMSBURY



DRESS UP AS **BILLY**

YOU WILL NEED:

- A green hooded top
- Jeans
- Inflated hand template
- Card
- Two pieces of elastic
- Sticky tape
- Scissors
- Glue



INSTRUCTIONS FOR THE INFLATED HAND:

- Print out the inflated hand template on to A3 paper.
- Stick this on to a piece of thick card and cut around it.
- Turn the hand over and stick two elastic bands to the back, one where your wrist will sit and one to sit where your fingers meet your hand.
- Slip your hand through both elastic bands to use your giant Billy hand!

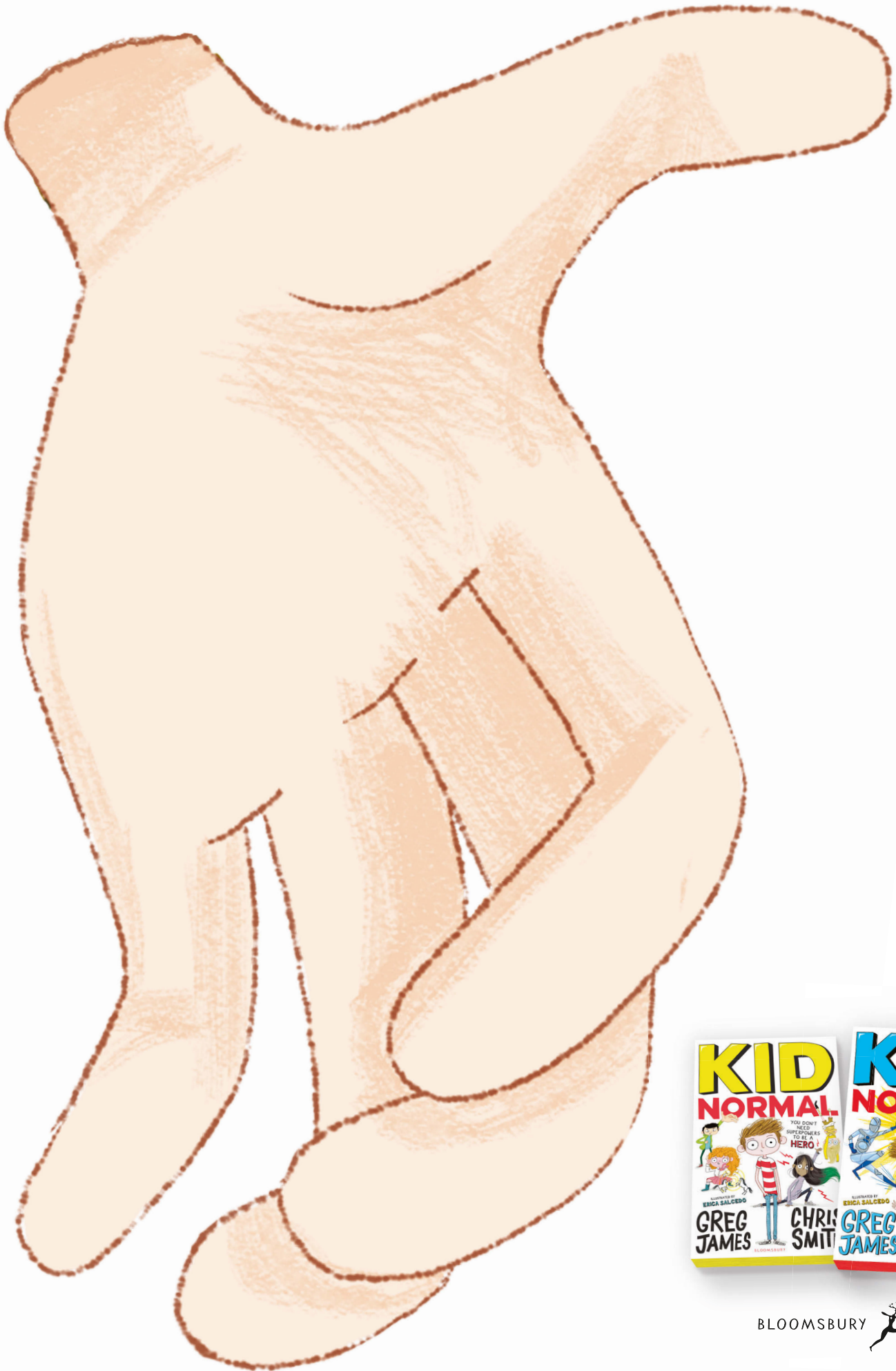
Watch the How To video at kidnormal.com!

YOU DON'T NEED
SUPERPOWERS
TO BE A **HERO**

BLOOMSBURY



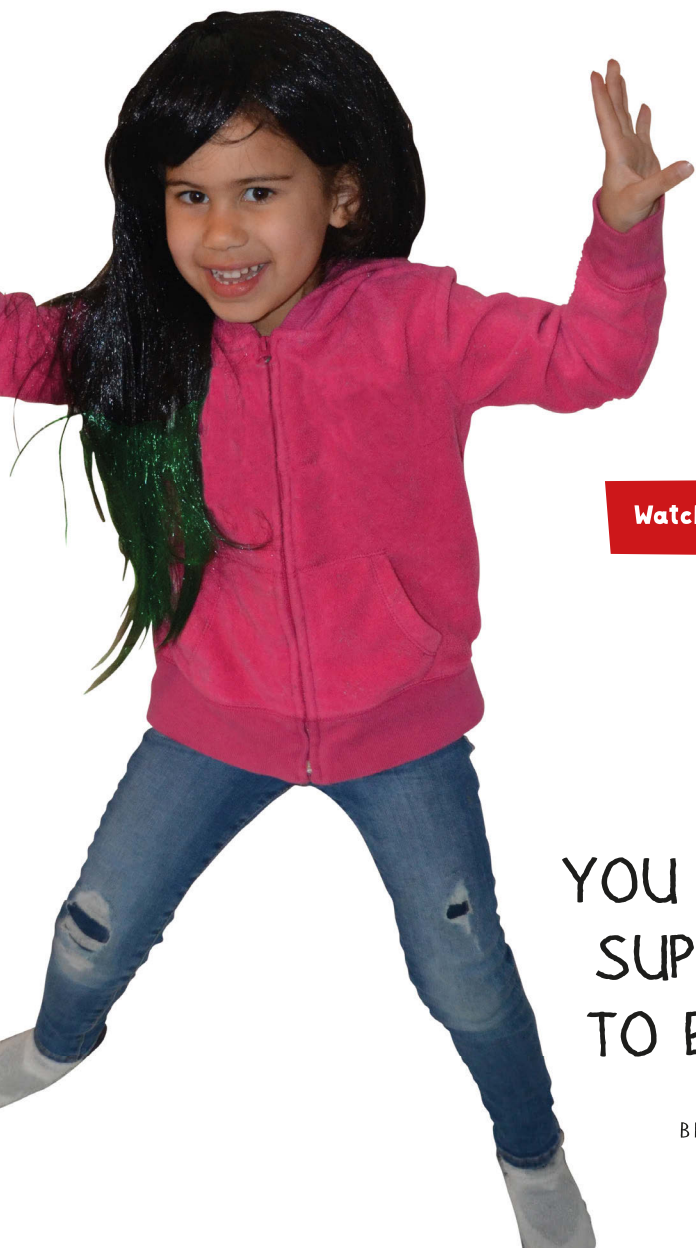
BILLY'S HAND TEMPLATE



DRESS UP AS **NELLIE**

YOU WILL NEED:

- Long black hair or a long black wig
- Green hairspray
- A baggy jumper
- Ripped jeans
- Your best superhero stance!
- A towel



INSTRUCTIONS FOR THE HAIR:

- Put on the long black wig, if you're using one.
- Put a towel around your shoulders to protect your clothes.
- Use the green hairspray as instructed on the can to spray the tips of your hair green.

Watch the How To video at kidnormal.com!

YOU DON'T NEED
SUPERPOWERS
TO BE A **HERO**

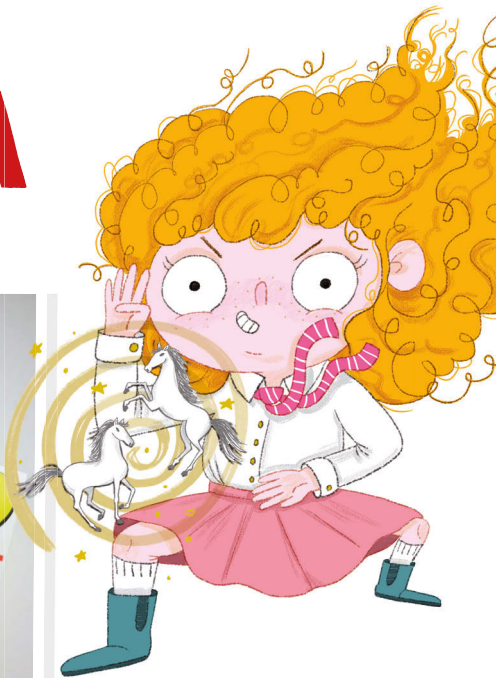
BLOOMSBURY



DRESS UP AS **HILDA**

YOU WILL NEED:

- A white shirt
- A pink skirt
- A pink tie
- Knee socks
- Tiny horse template
- Card
- Scissors
- Ribbon/string
- Hole punch
- Glue



INSTRUCTIONS FOR THE TINY HORSES:

- Print out the tiny horse template on to paper.
- Stick the paper on to a piece of thick card and cut around it.
- Punch two holes in the top of the card, and feed your ribbon/string through these holes to make a necklace.

Watch the How To video at kidnormal.com!

YOU DON'T NEED
SUPERPOWERS
TO BE A **HERO**

BLOOMSBURY



HILDA'S TINY HORSES TEMPLATE



YOU DON'T NEED
SUPERPOWERS
TO BE A **HERO**

BLOOMSBURY

