

Presented by The Creature Production Company in association with BBC Worldwide

# WALKING WITH DINOSAURS

THE ARENA SPECTACULAR

## HOW TO DRAW A DINOSAUR

Here's a chance to create your own dinosaur.  
Try this one first, then use the same basic shapes  
to make different kinds of creatures.

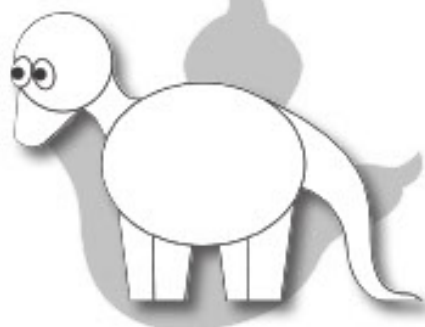
1



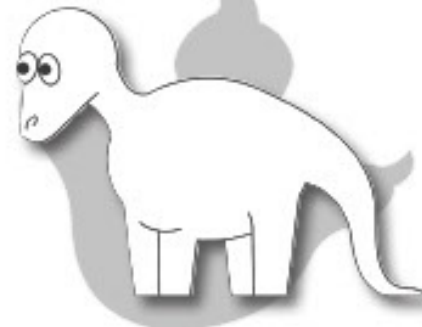
2



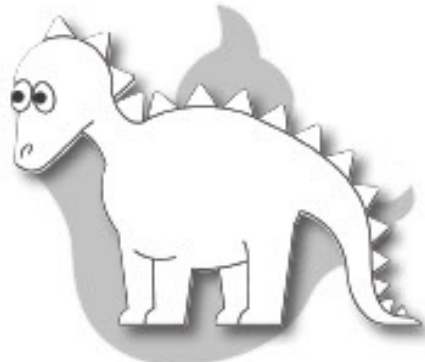
3



4



5



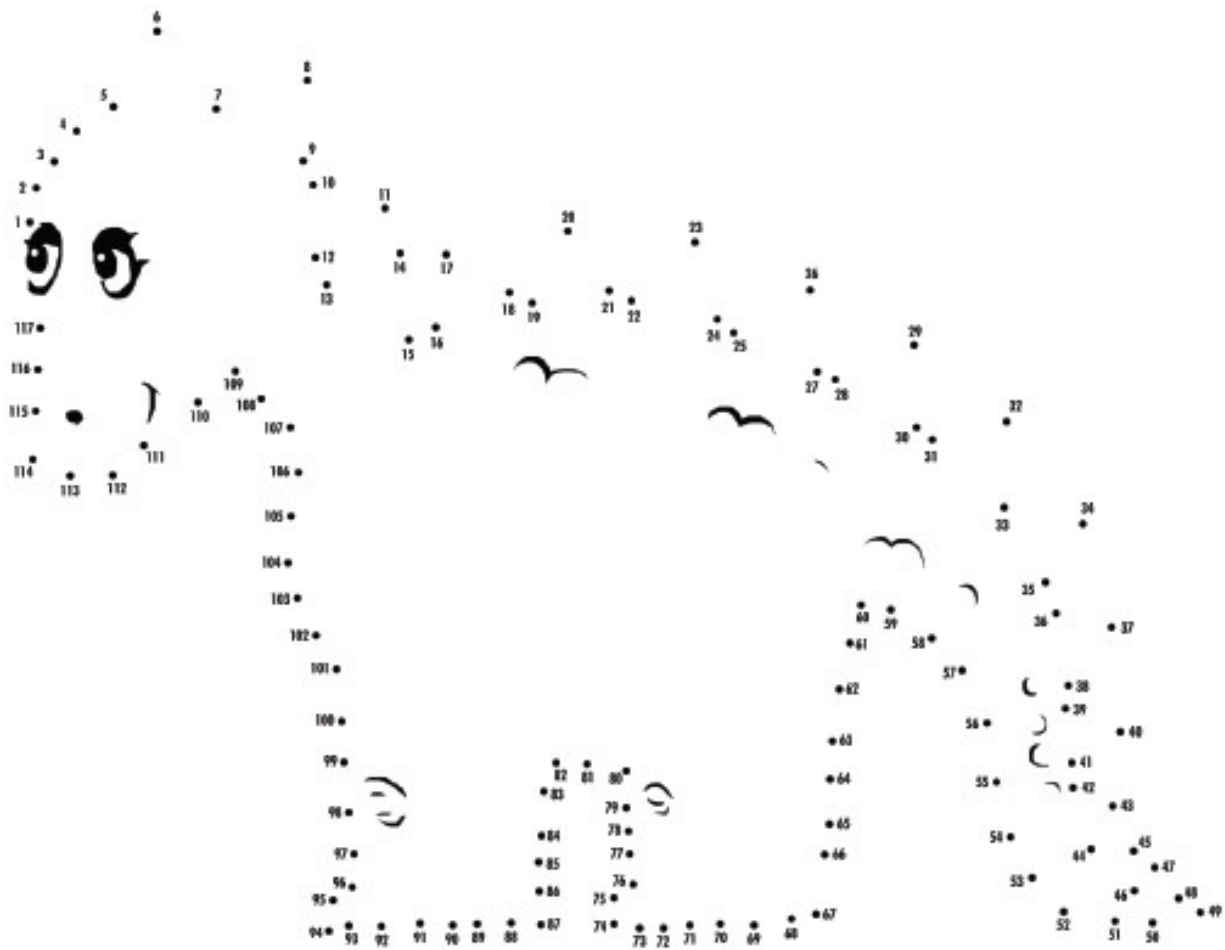
6



Presented by The Creature Production Company in association with BBC Worldwide

# WALKING WITH DINOSAURS

## THE ARENA SPECTACULAR



Walking With Dinosaurs is a trademark of the BBC Worldwide Group. Copyright © 2001 BBC. All rights reserved. The BBC is a trademark of the BBC Worldwide Group. Copyright © 2001 BBC. All rights reserved.



Presented by The Creature Production Company in association with BBC Worldwide

# WALKING WITH DINOSAURS

THE ARENA SPECTACULAR

NOW IT'S TIME TO BE A DINOSAUR DETECTIVE AND GO ON AN EXPEDITION TO FIND WORDS WHICH DESCRIBE WHAT THE WORLD WAS LIKE WHERE THE DINOSAURS LIVED.

|   |   |   |   |   |   |   |   |   |   |   |   |   |   |   |   |   |   |   |   |
|---|---|---|---|---|---|---|---|---|---|---|---|---|---|---|---|---|---|---|---|
| D | S | I | F | O | T | R | B | M | O | U | N | T | A | I | N | S | J | I | K |
| K | G | L | O | B | E | G | S | I | T | P | H | I | J | C | S | E | E | S | D |
| G | F | O | S | D | J | I | L | N | A | L | A | P | A | N | I | M | A | L | K |
| T | H | P | S | B | O | N | E | S | W | A | S | E | R | I | O | T | R | O | M |
| A | A | W | I | A | C | E | P | E | R | N | D | R | I | E | V | T | T | R | I |
| P | F | E | L | V | O | S | L | C | I | T | E | E | T | H | T | U | H | P | L |
| B | O | D | S | E | H | T | N | T | S | S | V | X | I | B | D | L | A | S | L |
| H | O | S | D | G | F | A | B | O | B | T | O | P | N | A | I | E | P | L | I |
| X | D | B | R | E | N | E | T | S | K | E | L | E | T | O | N | S | I | C | O |
| T | E | N | A | T | I | M | E | F | U | H | V | I | D | A | O | C | E | A | N |
| Q | I | N | I | A | S | S | G | S | I | O | E | N | E | S | S | O | R | A | G |
| I | Y | C | N | T | L | I | G | R | P | A | T | B | I | L | A | N | D | T | T |
| D | B | H | F | I | R | E | S | C | A | E | R | O | I | S | U | W | E | O | V |
| B | N | J | A | O | O | A | K | L | T | O | B | L | Q | A | R | Q | U | T | S |
| D | M | A | L | N | I | C | O | N | T | I | N | E | N | T | S | K | U | L | L |
| Z | V | O | L | C | A | N | I | C | A | F | I | P | W | E | R | T | U | S | P |
| J | O | U | R | N | E | Y | J | E | C | O | P | S | A | B | I | R | T | N | I |
| P | C | A | T | Y | S | A | F | K | K | O | M | C | I | S | D | I | L | E | S |
| S | A | I | E | L | A | I | R | C | U | R | R | E | N | T | S | G | I | U | L |

Bones

Rainfall

Dinosaurs

Vegetation

Time

Ocean

Journey

Mountains

Egg

Fossils

Globe

Attack

Animal

Teeth

Skeleton

Fires

Nest

Earth

Food

Million

Evolve

Continents

Land

Plants

Skull

Insect

Volcanic

Air currents

**Detective clue:** to find the words, look across and down only and keep a look out for words which share the same letters.